



جامعة الخليج الطبية  
GULF MEDICAL UNIVERSITY  
ACADEMIC HEALTH CENTER

# FACT BOOK

(AY 2024-2025)



# Table of Contents

Overview.....	3
Vision.....	4
Mission.....	5
Organizational Chart.....	6
Colleges and Departments.....	7
Programs with International Accreditation.....	8
Programs with International Collaboration.....	9
THE Impact Rankings 2024.....	10
THE Arab University Ranking.....	12
The Quality Assurance Agency, UK.....	13
The Round University Ranking.....	14
Program Details.....	16
Students Enrolment Trend.....	17
Students Enrolment Indicators.....	19
Internships/Clinical Trainings: Enrolment.....	20
Graduates.....	21
Overall Analysis of GMU Graduates.....	22
Faculty.....	23
Clinical Faculty.....	27
Research.....	29
GMU Top Scientists and Researchers Ordered by H-Index.....	30
Institutional Effectiveness Indicators & Graduate Perception Indicators.....	31
Student Satisfaction with Courses.....	32
Student Satisfaction with Faculty.....	34
Student Satisfaction with MBBS/MD Clinical Faculty (Phase 3).....	35
Employer Perception Indicator.....	36
Alumni Perception Indicator.....	37
Student Scholarships.....	38
Meet the QA&IE Team.....	40

# OVERVIEW



Academic Health Center  
Education, Research &  
Healthcare



**6**  
Colleges



**105** Students from  
Nationalities  
since inception



**2820** Students | **277**  
National  
Students



We employ our  
own graduates



**450+**  
Scopus Research  
Publications in 2024



**32**  
Accredited  
Programs



**561**  
Total  
Graduates



<b>225</b> FT Faculty	<b>31</b> PT Faculty	<b>87</b> Clinical Faculty
-----------------------------	----------------------------	----------------------------------

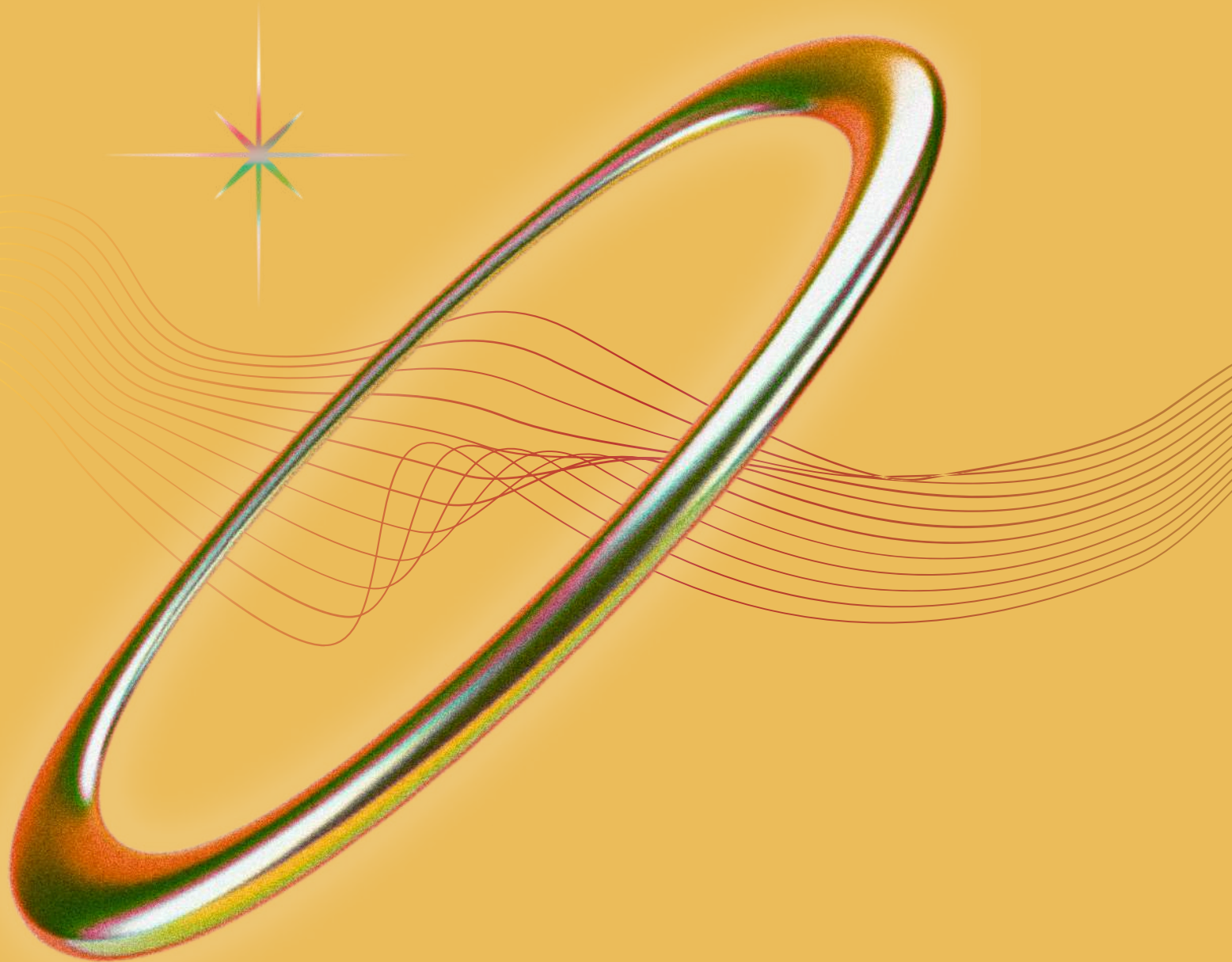


**27**  
Years of Excellence in  
Education, Healthcare &  
Research

**16** Academic  
Departments  
**6** Institutes  
**4** Centers

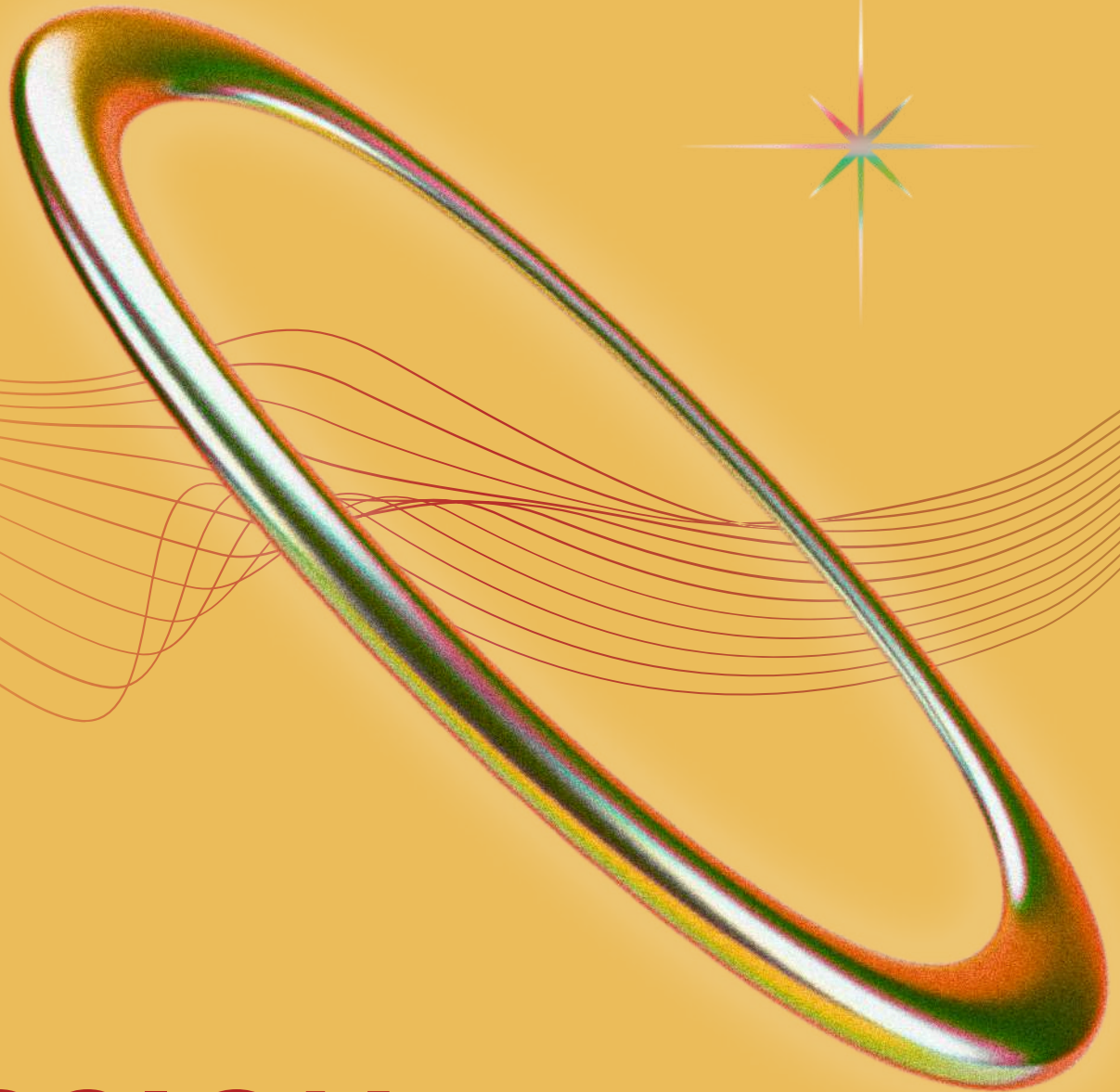


**6**  
Own Network of  
Hospitals



# VISION

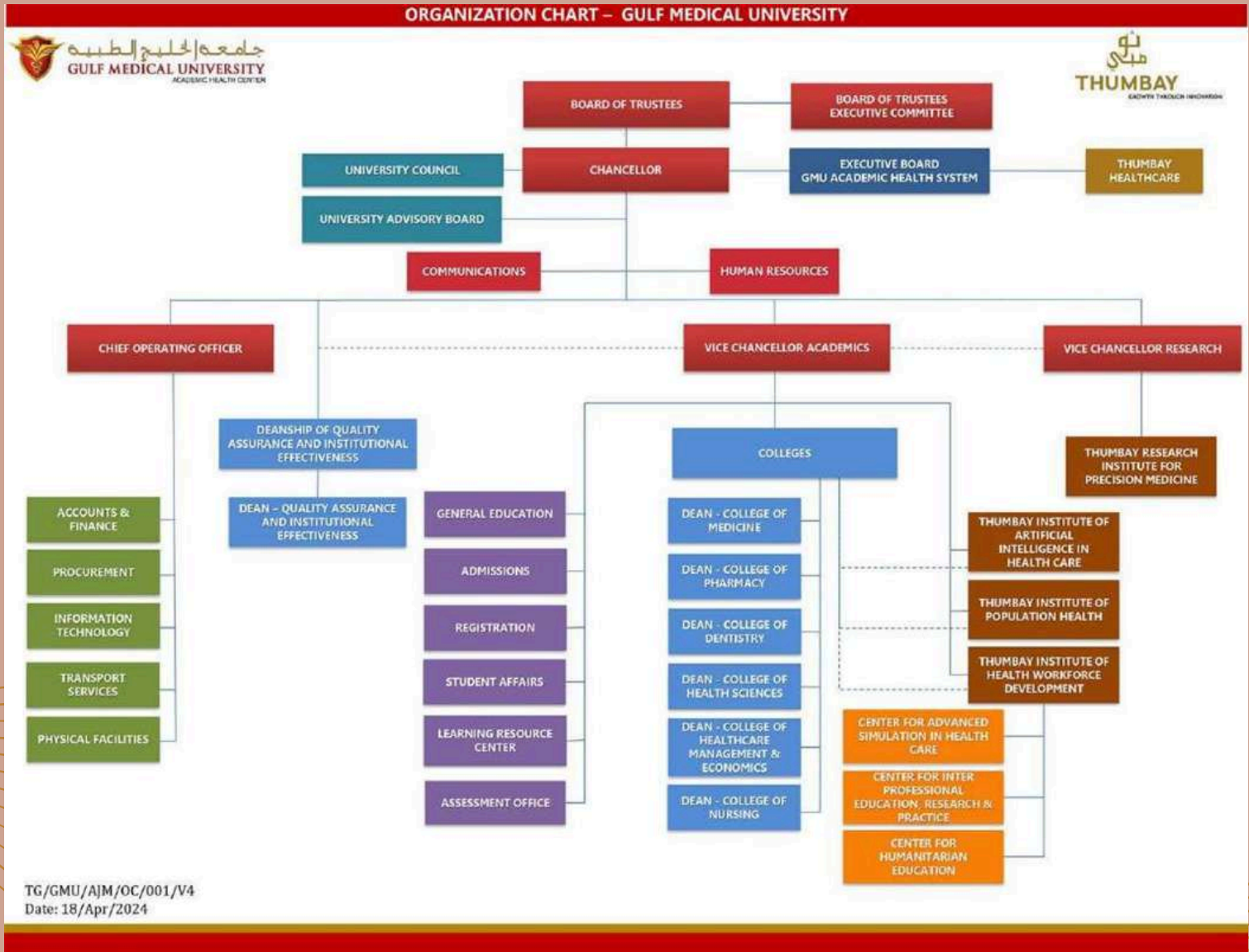
An internationally  
acclaimed sustainable  
Academic Healthcare  
Institution



# MISSION

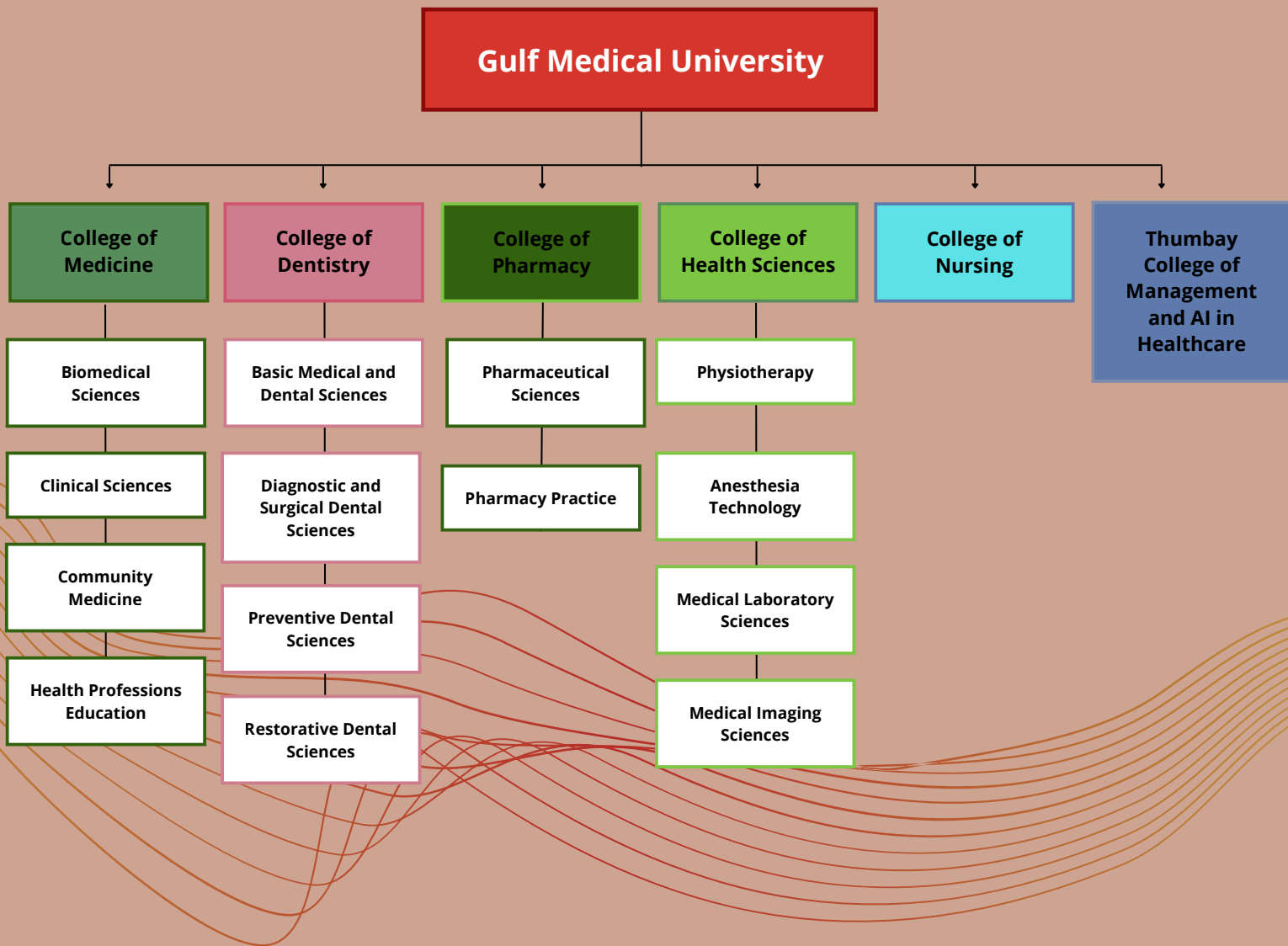
Pursue excellence in education, healthcare, and research with a focus on innovation, sustainability, social accountability, and strategic partnerships.

# Organizational Chart

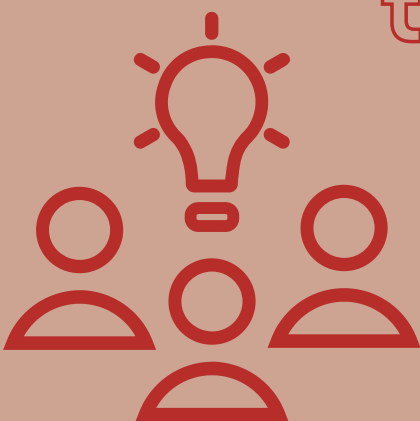


"Alone we can do so little; together we can do so much." - Helen Keller

# Colleges and Departments



"Alone we can do so little;  
together we can do so  
much." - Helen Keller



# Programs with International Accreditation



The Doctor of Medicine (MD) program Learning Outcomes is aligned to the World Federation of Medical Education (WFME), United States



The Bachelor of Biomedical Science (BBMS) program is internationally accredited by the Institute of Biomedical Science (IBMS), United Kingdom

International Program Accreditations



The Doctor of Pharmacy degree has been granted International Accreditation by the Accreditation Council for Pharmacy Education, United States



Bachelor Of Dental Surgery Program receives Five-Year International Accreditation From The Australian Dental Council (ADC), Australia



# Programs with International Collaboration

## Doctor of Philosophy in Precision Medicine (PhD PM)

Doctor of Philosophy in Precision Medicine [PhD PM] program: A Dual Degree with Paris-Saclay University, France

## Master's in public health (MPH)

Master's in public health (MPH) program in collaboration with Mel & Enid Zuckerman College of Public Health, University of Arizona, USA

## Master in Clinical Pharmacy (MCP)

Master in Clinical Pharmacy (MCP) program in collaboration with Virginia Commonwealth University-USA, and Cleveland Clinic Abu Dhabi, UAE

## Higher Diploma in Pre-Clinical Sciences (HDPCS)

The Higher Diploma in Pre-Clinical Sciences (HDPCS) offers a pathway to an MD degree in collaboration with top international universities, including the Medical University of Lublin (Poland), Vita-Salute San Raffaele University (Italy), International Islamic University of Malaysia, Misr University of Science and Technology (Egypt), and the University of Ghana.



# Rankings 2025



## Times Higher Education Impact Rankings 2025

Rank 77

Rank 101-200

Rank 101-200

Rank 201-300

Rank 801-1000

**4** QUALITY EDUCATION



**3** GOOD HEALTH AND WELL-BEING



**10** REDUCED INEQUALITIES



**8** DECENT WORK AND ECONOMIC GROWTH



**17** PARTNERSHIPS FOR THE GOALS



GMU Overall Rank 301-400 (Out of 2318 Institutions)

Gulf Medical University has achieved an impressive rank of 77th out of 1,975 universities globally for "Quality Education." Additionally, it ranks 101-200th for "Reduced Inequalities" and between 101-200th for "Health & Wellbeing" according to the Sustainable Development Goals (SDGs).

OVERALL SCORE

**77.3** out of 100

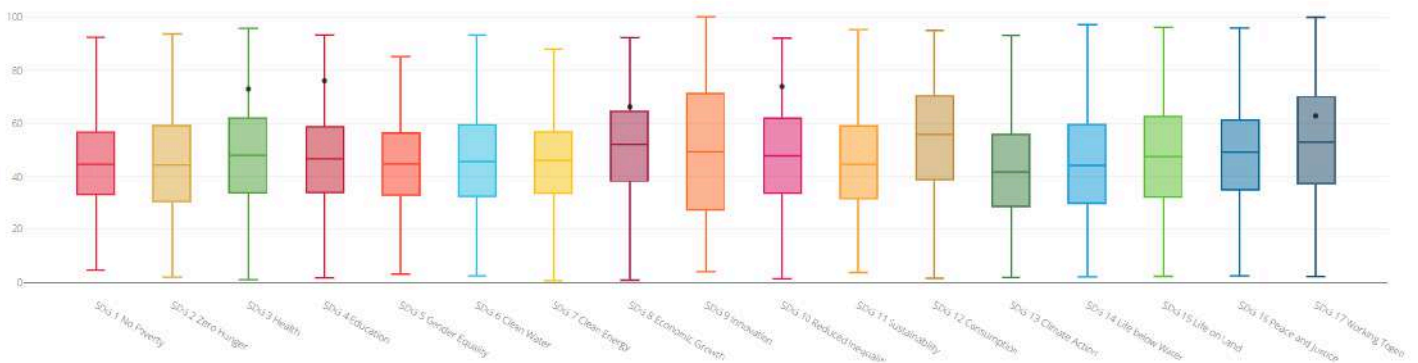
OVERALL RANK

**301-400** out of 2318 institutions

SDG PARTICIPATED

**5** out of 17 Sustainable Development Goals

SDG SCORES



# Rankings 2025

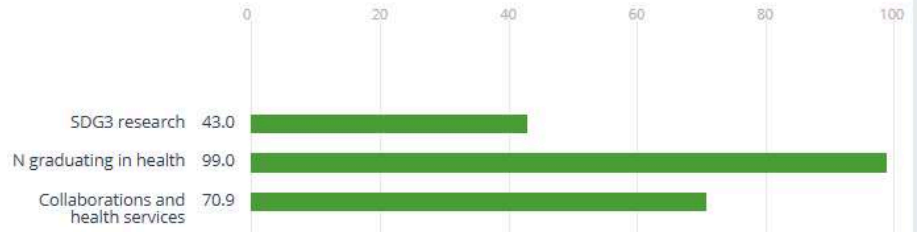
3 

## GOOD HEALTH AND WELLBEING

QUALIFYING SDG - 26% OF OVERALL

SCORE RANK  
**73.1** **101-200** out of 1788 institutions

[Details](#)



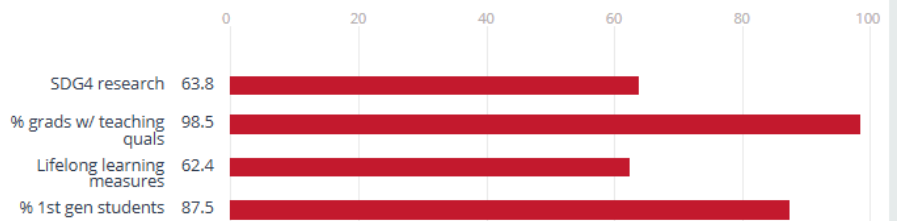
4 

## QUALITY EDUCATION

QUALIFYING SDG - 26% OF OVERALL

SCORE RANK  
**76.1** **=77** out of 1975 institutions

[Details](#)

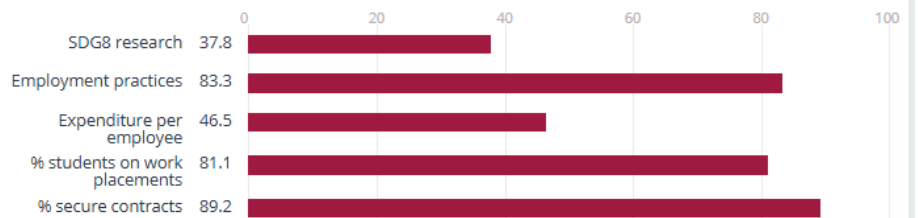


8 

## DECENT WORK AND ECONOMIC GROWTH

SCORE RANK  
**66.1** **201-300** out of 1350 institutions

[Details](#)



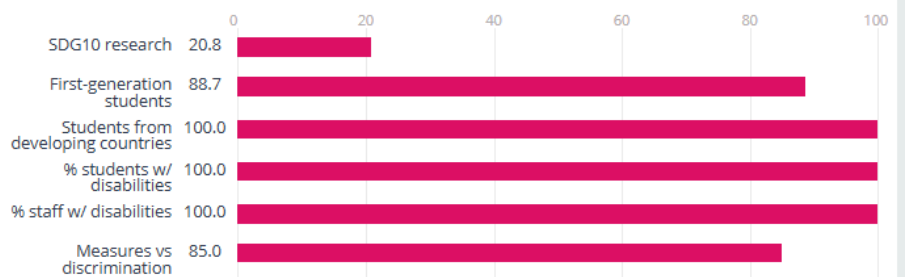
10 

## REDUCED INEQUALITIES

QUALIFYING SDG - 26% OF OVERALL

SCORE RANK  
**74.0** **101-200** out of 1261 institutions

[Details](#)



17 

## PARTNERSHIP FOR THE GOALS

MANDATORY QUALIFYING SDG - 22% OF OVERALL

SCORE RANK  
**62.8** **801-1000** out of 2389 institutions

[Details](#)



# Rankings 2025



## Arab University Rankings



**Gulf Medical University holds 81-90th Rank  
(out of 351 institutions) in Times Higher  
Education Arab Ranking 2024**



# Rankings 2025



**RUR**  
ROUND  
UNIVERSITY  
RANKING

## GULF MEDICAL UNIVERSITY SECURES ROUND UNIVERSITY RANKING 2025

RUR World University Rankings evaluate performance of world's leading higher education institutions by 20 indicators grouped into 4 key areas of university activity: Teaching, Research, International Diversity, Financial Sustainability.








World League

766

World rank

2

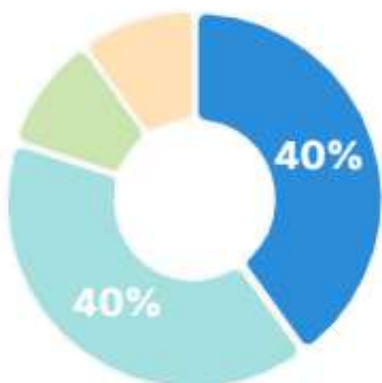
Country rank

Main rankings	Rank	Score
 World University Ranking	766	46.48
 Teaching Ranking	928	38.15
 Research Ranking	734	44.054
 International Diversity Ranking	78	85.403
 Financial Sustainability Ranking	856	35.511

RUR World University Rankings assess top world universities using 20 indicators across four key areas: Teaching, Research, International Diversity, and Financial Sustainability.

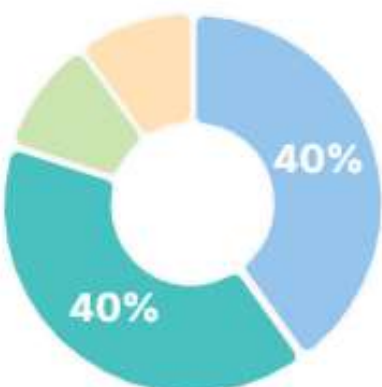
Gulf Medical University ranks 2nd in the UAE and 766th globally. GMU also holds **Diamond League** status in International Diversity, ranking 78th worldwide.

# Rankings 2025



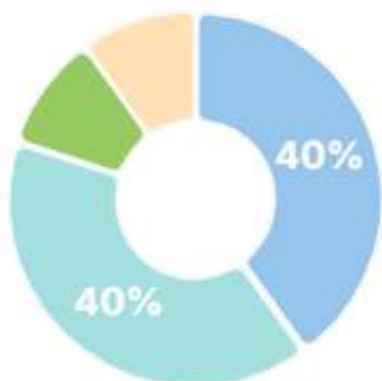
## Teaching 40%

World rank	928	Score	38.15
Country rank	1	World League	



## Research 40%

World rank	734	Score	44.054
Country rank	2	World League	



## International 10%

World rank	78	Score	85.403
Country rank	2	Diamond League	



## Financial 10%

World rank	856	Score	35.511
Country rank	3	World League	

# The Quality Assurance Agency 2025



## GULF MEDICAL UNIVERSITY SECURES GLOBAL QUALITY ACCREDITATION

The review, which took place in April 2021, was completed by a team of three independent reviewers, including an international expert and a student reviewer appointed by QAA. It was confirmed that Gulf Medical University (GMU) meets all 10 of the ESG. GMU also successfully underwent a comprehensive Mid-cycle Review, reaffirming its dedication to quality and excellence. The accredited status will continue until June 2026.



The review team also identified a number of features of good practice:

### QA&IE PORTAL

GMU's Quality Assurance and Institutional Effectiveness portal, which provides staff at all levels with easy access to data and information.

### FEEDBACK

Multiple opportunities for students to provide feedback, which has positively impacted on the overall learning experience.

### BENCHMARKING

Effective use of external examiners, and externality more broadly, in assuring assessment standards and external benchmarking.

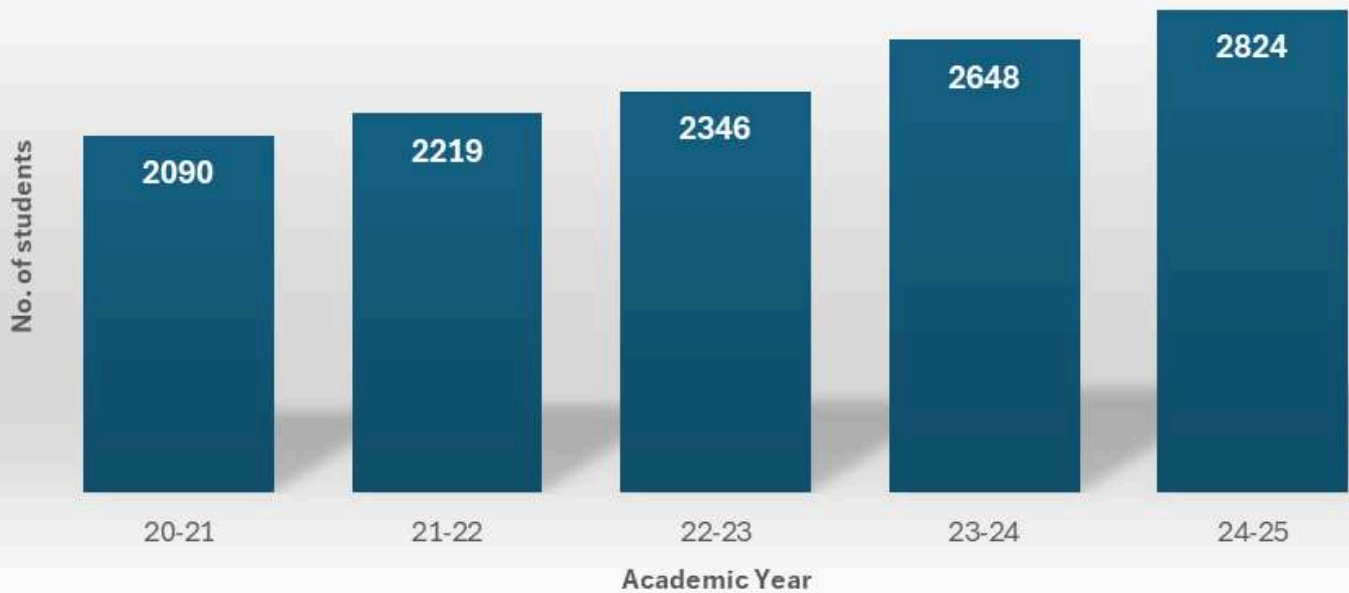
In January 2024, GMU was granted continuation of its accreditation status until June 2026. The full report is accessible through the following link: [\[link\]](#). This decision comes after a comprehensive Mid-cycle Review, affirming the university's significant progress and dedication to excellence in education and healthcare.

# Program Details

College	Program	Program Type	Program Level	Program Length (in Year)	Program Credit	Program Intake Capacity
College of Medicine	MD	PG	Level 7	6	224	115
	BBMS	UG	Level 6	4	128	35
	GMD	PG	Level 7	4	152	25
	HDPCS	UG-Higher Diploma	Level 5	3	96	100
	MPH	PG	Level 7	2	45	10
	MHPE	PG	Level 7	2	36	15
	DHPE	PG Diploma	Level 7	2	24	12
	PhDPM	Doctorate	Level 8	4	60	2
College of Dentistry	BDS	UG	Level 6	5	200	80
	MDS Periodontics	PG	Level 7	3	80	4
	MDS Endodontics	PG	Level 7	3	80	4
	DDA	Diploma	Level 5	2	90	20
College of Pharmacy	BPharm	UG	Level 6	4.5	163	55
	PG PharmD	PG	Level 7	2	71	10
	MCP	PG	Level 7	2	40	20
	MDD	PG	Level 7	2	33	10
	DPT	Diploma	Level 5	2	92	20
College of Health Sciences	BPT	UG	Level 6	4	159	40
	MPT	PG	Level 7	2	39	8
	BSc. AT	UG	Level 6	4	128	25
	BSc. MIS	UG	Level 6	4	128	25
	BSc. MLS	UG	Level 6	4	128	25
	MSc MLS	PG	Level 7	2	36	5
	MSc MUS	PG	Level 7	2	42	15
	BSc. ASLP	UG	Level 6	4	137	10
	BSc. OPT	UG	Level 6	4	136	10
College of Nursing	BSN	UG	Level 6	4	128	65
	RN-BSN	UG	Level 6	2	65	10
	MSNCCN	PG	Level 7	2	37	15
Thumbay College of Management and AI in Healthcare	BSc. HME	UG	Level 6	4	123	65
	EMHME	PG	Level 7	1	36	35

# Students Enrolment Trend

Growth in Student Enrolment over 5 years



# Students Enrolment Trend

Program	% Freshmen Enrollment	% Overall Enrollment	% National Students	Average cGPA
Bachelor of Biomedical Science-BBMS	100	100	3.5	3.4
Bachelor of Dental Surgery-BDS	100	99	4.5	3
Bachelor of Physiotherapy-BPT	100	100	13.3	3.4
Bachelor of Science in Healthcare Management and Economics-BSc.HME	74	47	2.5	3.3
Bachelor of Science in Nursing for the Registered Nurses-RN-BSN	60	60	4.2	3.9
Bachelor of Science in Nursing-BSN	100	77	20.4	3.2
Bpharm/PharmD	82	63	3.4	3.1
BSc - Anesthesia Technology-BSc-AT	100	100	22.1	3.2
BSc - Medical Imaging Sciences-BSc-MIS	100	100	11.5	2.9
BSc - Medical Laboratory Sciences-BSc-MLS	100	100	13	3.4
Diploma in Pharmacy Technician -DPT	60	45	72.2	3.3
Diploma of Dental Assistant -DDA	70	60	79.2	3.6
Doctor of Philosophy in Precision Medicine-PhD PM	0	50	0	3
Executive Master in Healthcare Management and Economics-EMHME	57	80	35.7	3.9
Graduate entry MD program-MD program	100	100	6.7	2.7
Graduate PharmD	65	95	10.5	3.7
HDPCS/ADPCS	100	100	2.1	3.3
Master in Clinical Pharmacy-MCP	90	100	12.5	3.6

# Students Enrolment Trend



Program	% Freshmen Enrollment	% Overall Enrollment	% National Students	Average cGPA
Master in Public Health-MPH	40	50	40	3.9
Master of Dental Surgery in Endodontics-MDS Endo	100	100	0	3.6
Master of Dental Surgery in Periodontics-MDS Perio	100	100	0	3.5
Master of Physical Therapy-MPT	100	100	7.4	3.6
Master of Science in Drug Discovery and Development-MDD	50	70	0	3.6
Master of Science in Medical Laboratory Sciences-MSc MLS	80	83	16	3.6
Master of Science in Medical Ultrasound-MSc MUS	100	80	33.3	3.4
Master of Science in Neonatal Critical Care Nursing-MSNCCN	80	80	0	3.4
Masters in Health Professions Education-MHPE	100	100	14.3	3.5
MBBS/MD	100	97	5.2	3.3

# Internships/ Clinical Trainings Enrolment

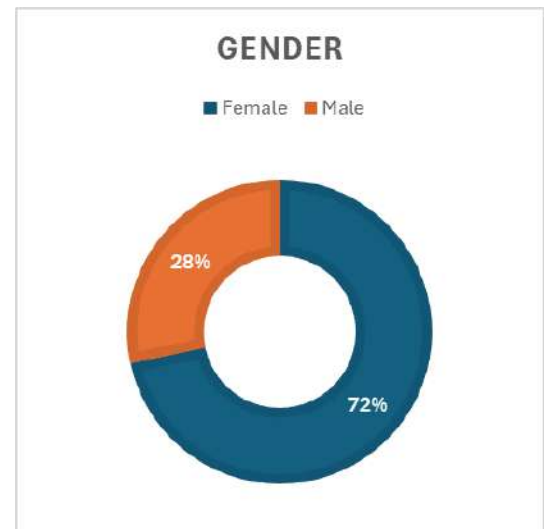
Programs	GMU Students	Outside Students	Total No. of Interns
Dentistry	46	18	64
Medicine	46	34	80
<b><u>Total</u></b>	<b><u>92</u></b>	<b><u>52</u></b>	<b><u>144</u></b>



# Analysis of 24/25 Graduates

**N= 561**

Programs	Number of Graduates
MBBS	106
BPT	41
DMD	71
PharmD	40
BBMS	33
BSc. MLS	33
BSc. MIS	23
BSc. AT	41
BSN	50
ADPCS	35
BSc. HME	12
DHPE	0
MPH	8
MPT	9
EMHME	16
MCP	6
MHPE	25
MSc MLS	4
MDS Endo	4
MDS Perio	3
MDD	1
M Tox	0
MS CP	0
<b>Total Graduates</b>	<b>561</b>



Country	Number of Students
India	108
Jordan	32
United Arab Emirates	50
Syria	44
Pakistan	26
Egypt	31
Bahrain	16
Nigeria	18
Palestine	18
Sudan	20
Iraq	34
USA	10
Yemen	10
China	8
Saudi Arabia	3
Others	133
<b>Total</b>	<b>561</b>

# Overall Analysis of GMU Graduates

Program	Number of Graduates
MBBS	1482
BPT	446
DMD	524
PharmD	296
BBMS	181
BSc. MLS	113
BSc. MIS	89
BSc. AT	135
BSN	294
ADPCS	151
BSc. HME	22
DHPE	3
MPH	41
MPT	31
EMHME	69
MCP	58
MHPE	69
MSc MLS	45
MDS Endo	13
MDS Perio	18
MDD	4
M Tox	19
MS CP	21
<b>Total Graduates</b>	<b>4124</b>

## Overall Analysis of GMU Graduates since Inception

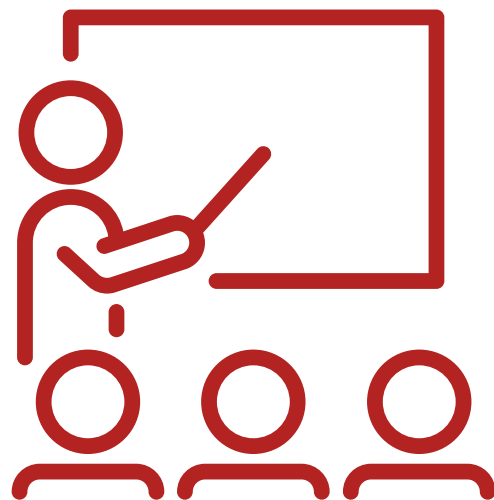
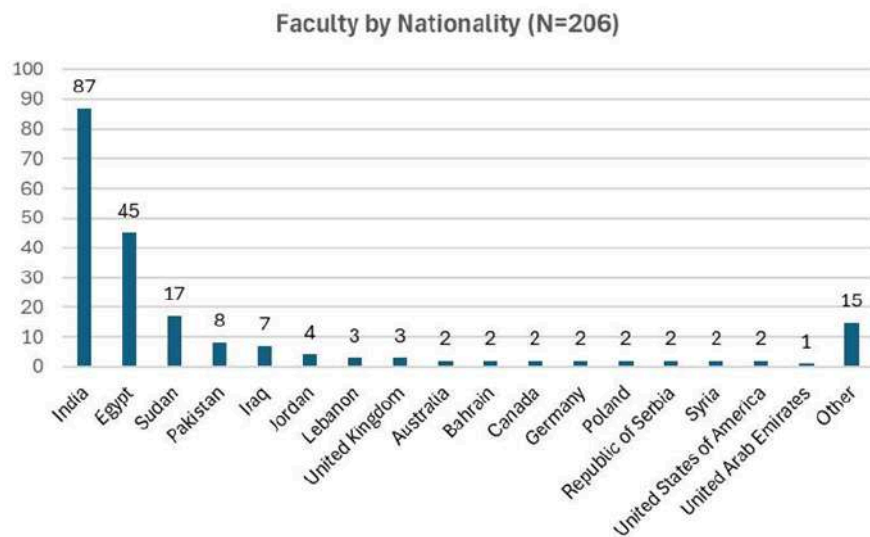
(N=4124, Female= 2990, Male = 1134)

Academic Year	Total Graduates
2004-2005	94
2005-2006	89
2006-2007	84
2007-2008	83
2008-2009	89
2009-2010	73
2010-2011	118
2011-2012	106
2012-2013	101
2013-2014	109
2014-2015	132
2015-2016	119
2016-2017	197
2017-2018	188
2018-2019	221
2019-2020	357
2020-2021	457
2021-2022	438
2022-2023	508
2023-2024	561

Faculty & Professional Staff	Number of Faculty
Nationality	
India	104
Egypt	59
Sudan	18
Pakistan	9
Iraq	7
Jordan	7
Syria	6
Bahrain	3
Iran	3
Lebanon	3
United Kingdom	3
United States of America	3
Afghanistan	2
Australia	2
Azerbaijan	2
Canada	2
Germany	2
Philippines	2
Poland	2
Republic of Serbia	2
Yemen	2
United Arab Emirates	1
<i>Others</i>	<i>12</i>
<b>Total</b>	<b>256</b>

# Faculty

Faculty & Professional Staff (FT & PT)  
Classification by Gender

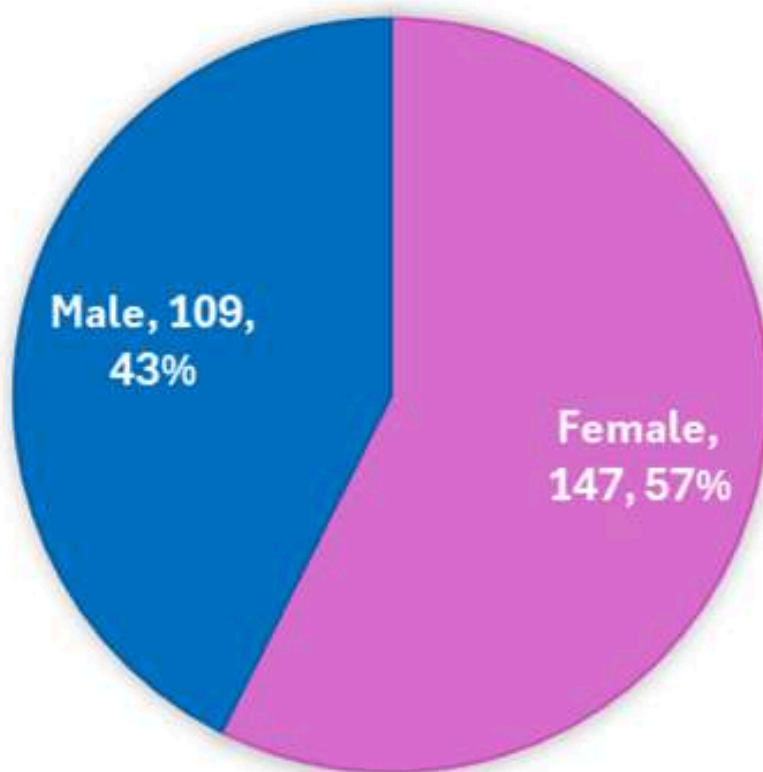


# Faculty

Faculty & Professional Staff (FT & PT)  
Classification by Nationality

Gender	Faculty & Professional Staff Count
Female	147
Male	109
<b>Total</b>	<b>256</b>

**FACULTY & PROFESSIONAL STAFF BY GENDER**  
(N=256)

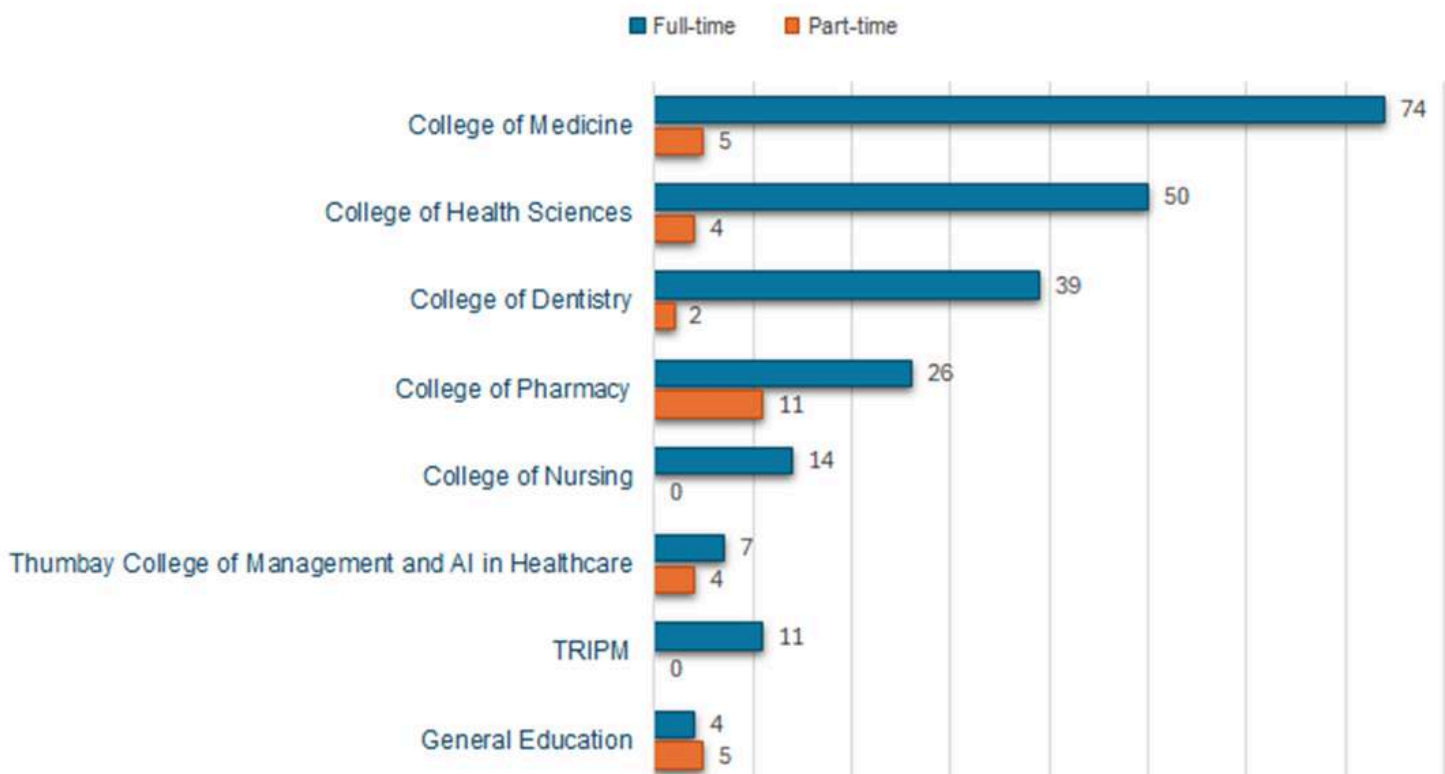


# Faculty

Faculty & Professional Staff (FT & PT)  
Classification by College

College / Department	FT	PT	Total
College of Dentistry	39	2	41
College of Health Sciences	50	4	54
Thumbay College of Management and AI	7	4	11
College of Medicine	74	5	79
College of Nursing	14	0	14
College of Pharmacy	26	11	37
General Education	4	5	9
TRIPM	11	0	11
<b>Total</b>	<b>225</b>	<b>31</b>	<b><u>256</u></b>

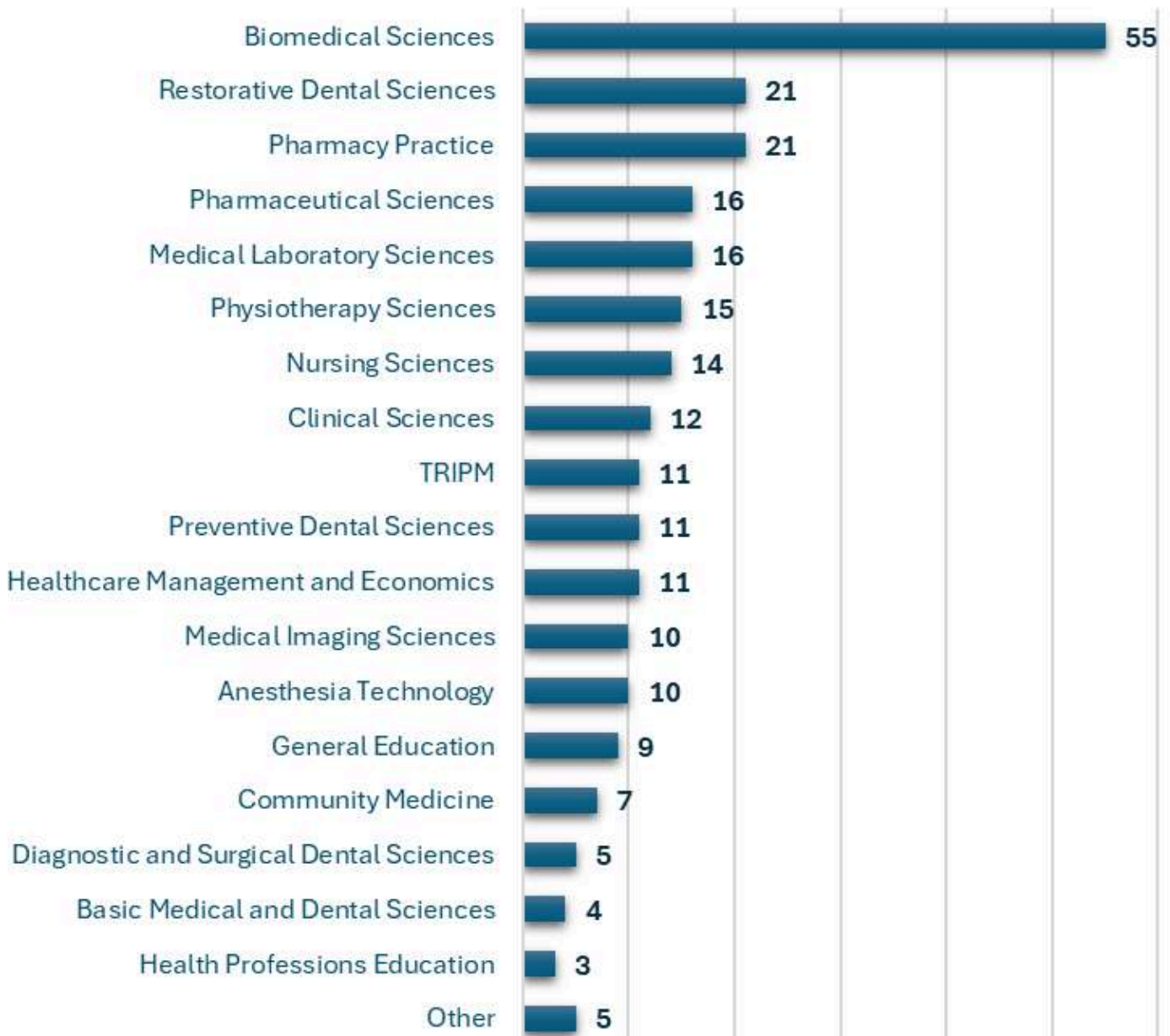
Faculty & Professional Staff (FT/PT) by College/Department (N=256)



# Faculty

Faculty & Professional Staff by Department (N=256)

Faculty & Professional Staff by Department (N=256)

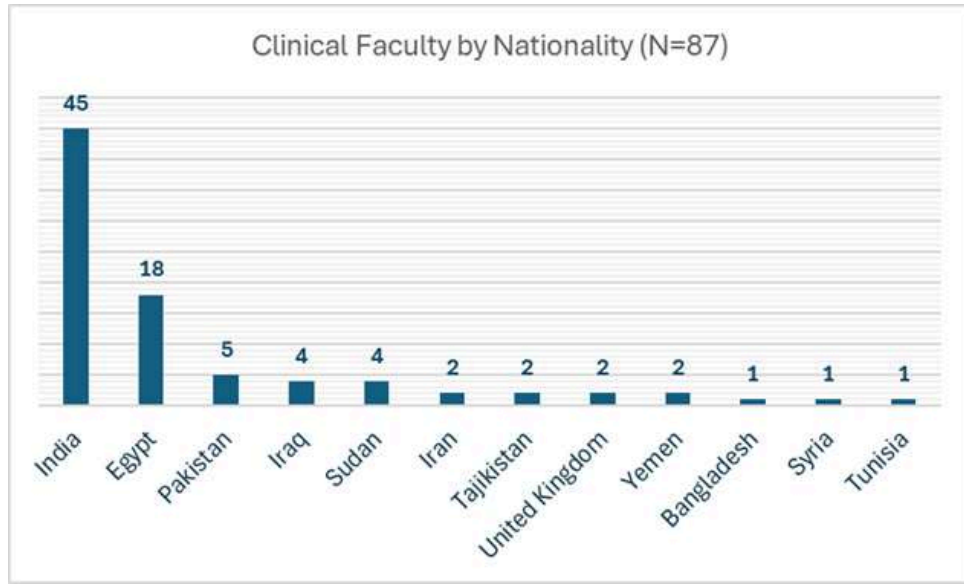


# Clinical Faculty



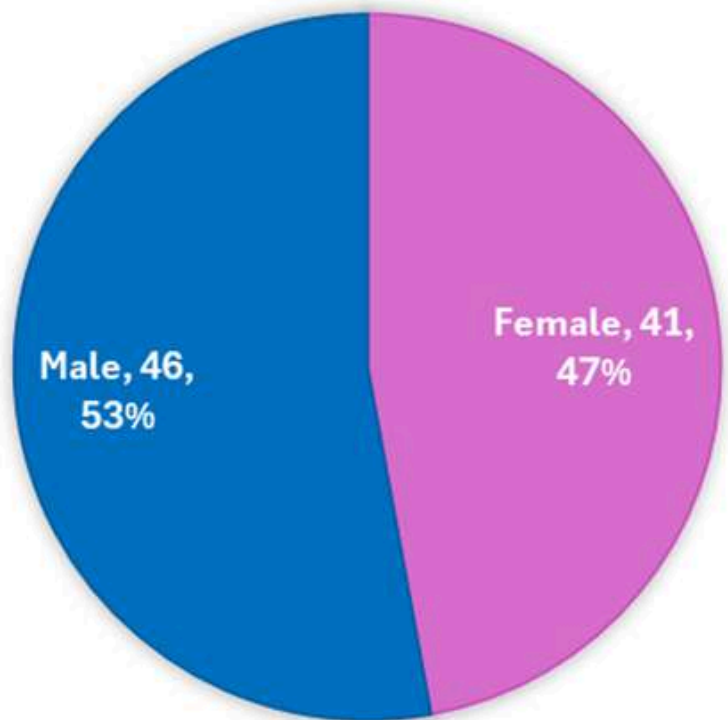
## Clinical Faculty Classification by Nationality & Gender

Clinical Faculty	Count Nationality
India	45
Egypt	18
Pakistan	5
Iraq	4
Sudan	4
Iran	2
Tajikistan	2
United Kingdom	2
Yemen	2
Bangladesh	1
Syria	1
Tunisia	1
<b>Total</b>	<b>87</b>



## CLINICAL FACULTY BY GENDER (N=87)

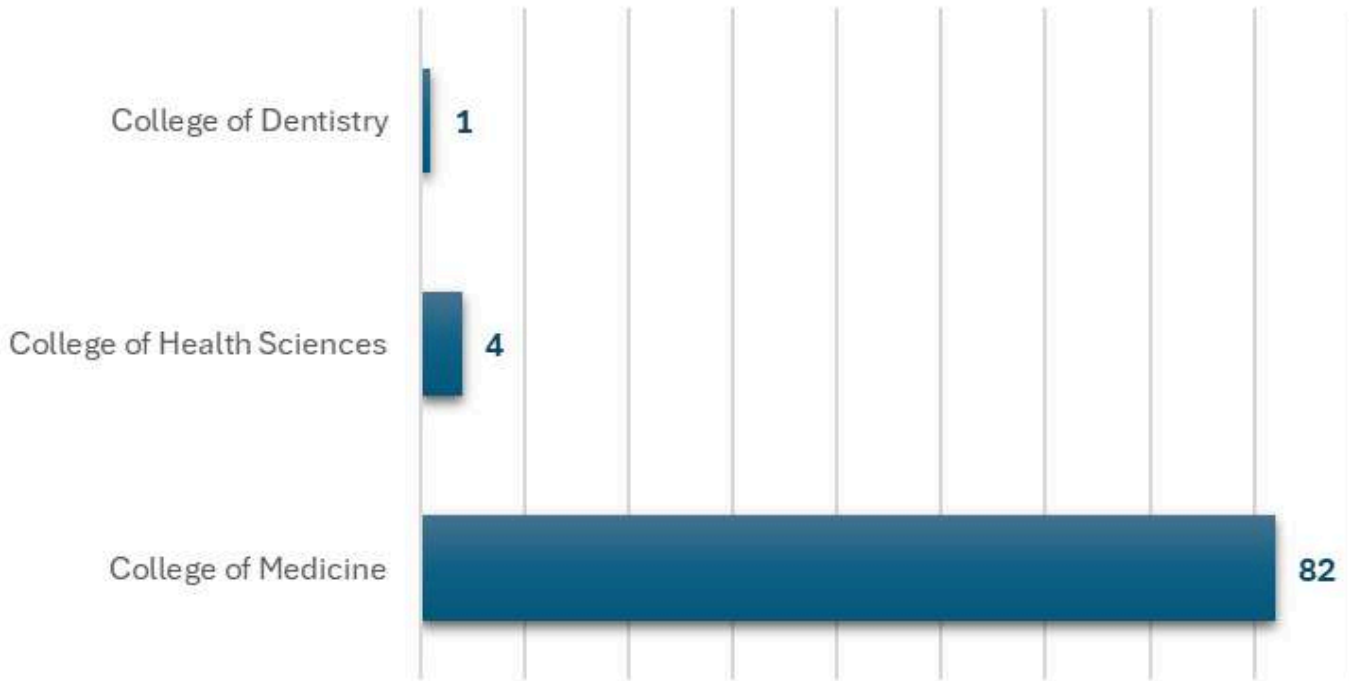
Gender	Number of Faculty
Female	41
Male	46
<b>Total</b>	<b>87</b>



# Clinical Faculty

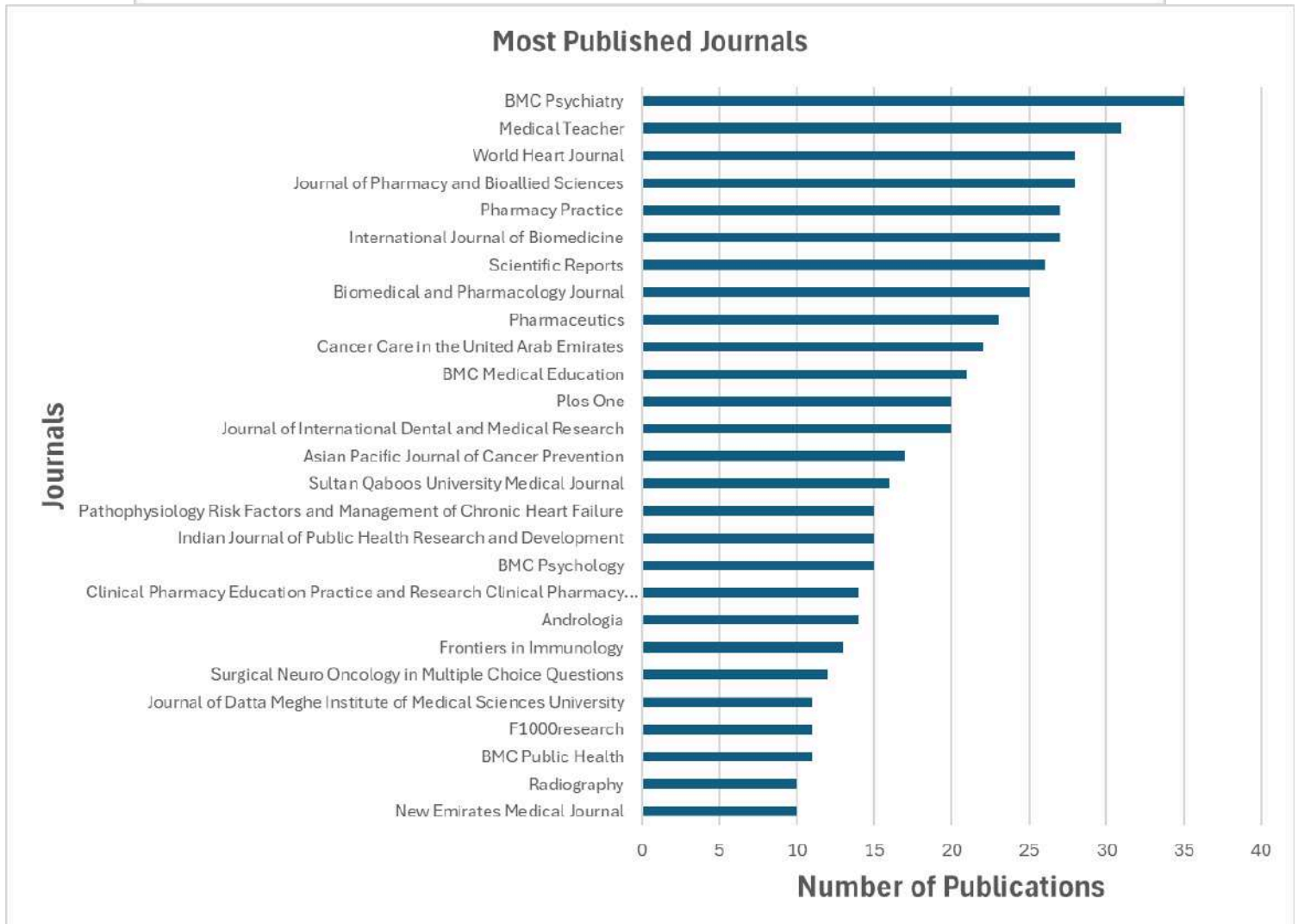
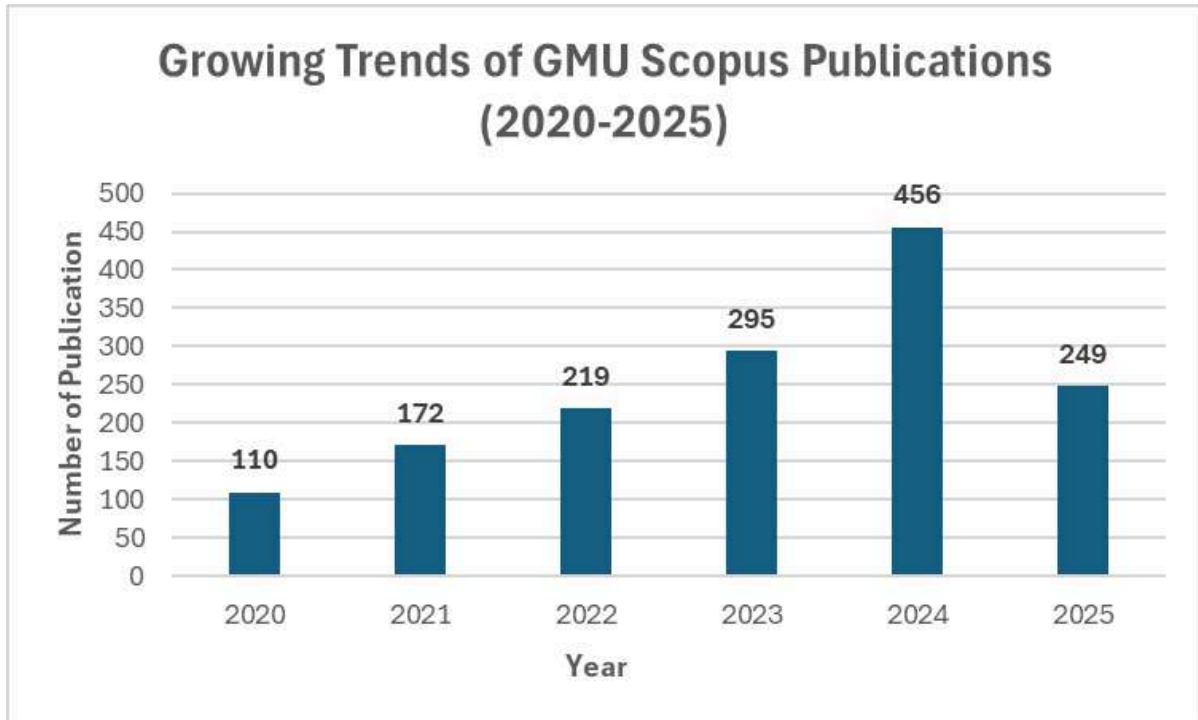
Clinical Faculty Classification by Colleges

Clinical Faculty by College (N=87)



# Research

\*Data taken from Scopus.com in July 2025



# GMU Top Scientists and Researchers

\*Data taken from Scival in July 2025

Name	Scholarly Output	<i>h</i> -index
Chouaïb, Salem	372	75
Saad, Farid	133	54
Sengupta, Pallav	217	46
Jacob, Shery	84	33
Hassanein, Mohamed M.	118	30
Taylor, David C.M.	189	39
Stephan, Thompson	90	25
Kassab, Salah Eldin	73	24
Malaeb, Diana N.	229	20
Rana, Sudhir	100	19
Saad, Muhammed A.	46	19
Sreedharan, Jayadevan	115	18
Khanam, Razia	53	18
Al-Shorbagy, Muhammad Yusuf	33	16
Iqbal, Mohammad Askandar	26	16
El-Sayed, W. Shaaban	34	15
A Elnour, Asim Ahmed	102	15

# Institutional Effectiveness Indicators

Internal Benchmark > 4.25

Curriculum  
4.59

Faculty  
4.71

Academic Advising & Mentorship  
4.6

Assessment  
4.76

Teaching & Learning  
4.66

Student Satisfaction with

Career Advising  
4.42

Research Facilities  
4.45

Simulation  
4.51

Practical/Lab Sessions  
4.6

Experiential Learning  
4.64

## Graduate Perception Indicators

Graduate Perception Indicators Value	
Graduate Satisfaction with Academic Advising & Mentorship	91.9
Graduate Satisfaction with Experiential Learning & Clinical Postings (%)	92.8
Graduate Satisfaction with their engagement in community services & projects	88.6
Graduate Satisfaction with their Faculty	94.3
Graduate Satisfaction with the Curriculum	91.9
Graduate Satisfaction with the Teaching & Learning	93.3
Graduate Satisfaction with the Assessment	95.2
Graduate Satisfaction with the use of Simulation	90.3
Graduate Satisfaction with Research Facilities	88.9
Graduate Satisfaction with Career Advising	88.4
Graduate Satisfaction with Interprofessional Education	93.5
Graduate Satisfaction with Extra-Curricular Activities	83.5

# Student Satisfaction with Learning Environment

Internal Benchmark > 4.25

Curriculum  
4.59

Faculty  
4.71

Academic Advising & Mentorship  
4.6

Assessment  
4.76

Teaching & Learning  
4.66

Student Satisfaction with

Career Advising  
4.42

Research Facilities  
4.45

Simulation  
4.51

Practical/Lab Sessions  
4.6

Experiential Learning  
4.64

# Student Satisfaction with University Services

Internal Benchmark = 85%

Student Satisfaction with University Services	
Student Satisfaction with Student Happiness Center	91.75
Student Satisfaction with Other College Services (Labs, Academic advising, Assistance etc.)	90.4
Student Satisfaction with IT Services	87.7
Student Satisfaction with Library Services	94.3
Student Satisfaction with Testing Center	93
Student Satisfaction with Student Affairs	90.3
Student Satisfaction with Other University Services (Cafeteria, Transportation etc.)	87.1
Student Satisfaction with Hostel Services	89.9
Student Satisfaction with Role as a Committee Member	92.85

# Graduate Perception Indicators

Internal Benchmark = 85%

Graduate Perception Indicators Value	
Graduate Satisfaction with Academic Advising & Mentorship	91.9
Graduate Satisfaction with Experiential Learning & Clinical Postings (%)	92.8
Graduate Satisfaction with their engagement in community services & projects	88.6
Graduate Satisfaction with their Faculty	94.3
Graduate Satisfaction with the Curriculum	91.9
Graduate Satisfaction with the Teaching & Learning	93.3
Graduate Satisfaction with the Assessment	95.2
Graduate Satisfaction with the use of Simulation	90.3
Graduate Satisfaction with Research Facilities	88.9
Graduate Satisfaction with Career Advising	88.4
Graduate Satisfaction with Interprofessional Education	93.5
Graduate Satisfaction with Extra-Curricular Activities	83.5



# Student Satisfaction with Courses

Internal Benchmark = 85%



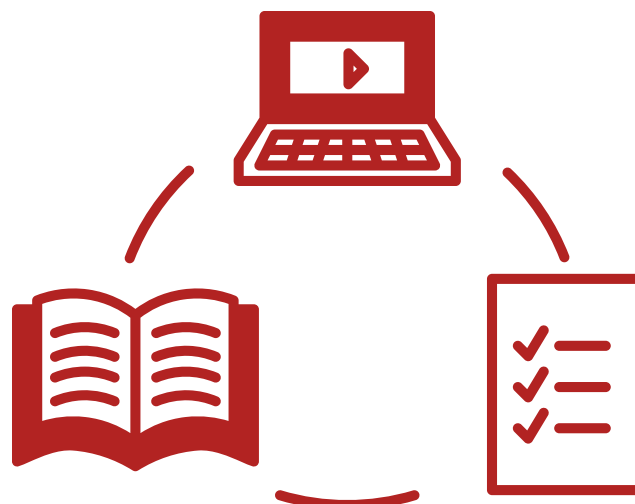
Programs	Course Organization	CLO Achievement	Experiential Learning	Assessment Strategies	Teaching & Learning	Learning Resources	Instructor Feedback	Effectiveness of Practice Questions	Overall Course Satisfaction
<b>BBMS</b>	95.28	96.76	92.88	95.7	94.46	95.94	94.2	95.09	<b>95.04</b>
<b>BDS</b>	96.78	96.81	96.38	97.21	96.83	97.26	97.44	97.47	<b>97.02</b>
<b>BPharm</b>	96.51	97.2	96.1	97.33	96.72	97.45	96.59	97.34	<b>96.91</b>
<b>BPT</b>	96.03	95.8	94.31	96.12	96.15	96.15	95.73	96.24	<b>95.82</b>
<b>BSc. AT</b>	95.9	96.53	95.35	96.18	96.13	96.54	96.12	95.84	<b>96.07</b>
<b>BSc. HME</b>	95.13	94.75	93.31	94.79	94.59	94.82	95.15	94.63	<b>94.65</b>
<b>BSc. MIS</b>	96.96	96.75	94.92	96.23	95.89	96.09	95.26	96.4	<b>96.06</b>
<b>BSc. MLS</b>	97.14	96.99	96.2	97.21	97.14	96.95	97.28	97.46	<b>97.05</b>
<b>BSN</b>	96.48	96.4	96.11	96.64	96.92	96.25	96.16	97.23	<b>96.52</b>
<b>EMHME</b>	96.63	97.34	96.46	97.87	97.87	97.69	95.92	97.34	<b>97.14</b>
<b>GMD</b>	84.06	88.6	87	87.1	89.22	89.81	80.96	87.38	<b>86.77</b>
<b>HDPCS</b>	93.59	94.34	92.3	94.57	93.69	93.24	92.36	94.88	<b>93.62</b>
<b>MBBS</b>	91.83	92.85	91.42	93.6	93.33	94.16	94.52	96.04	<b>93.47</b>
<b>MCP</b>	98.2	98.89	96.55	96.52	97.5	97.36	96.11	95.94	<b>97.13</b>
<b>MD</b>	94.22	94.87	94.18	94.98	95.25	95.33	95.72	95.65	<b>95.03</b>
<b>MDD</b>	96.66	98.75	94.16	97.02	97.82	99.56	94.34	95.34	<b>96.71</b>
<b>MDS Endo</b>	96.22	98.49	95.47	98.49	99.24	99.62	98.11	100	<b>98.21</b>
<b>MDS Perio</b>	97.14	98.8	98.09	98.07	100	99.27	100	100	<b>98.92</b>
<b>MHPE</b>	97.71	98.28	97.14	98.55	96.57	98.28	96	98.55	<b>97.64</b>

# Student Satisfaction with Courses

Internal Benchmark = 85%



Programs	Course Organization	CLO Achievement	Experiential Learning	Assessment Strategies	Teaching & Learning	Learning Resources	Instructor Feedback	Effectiveness of Practice Questions	Overall Course Satisfaction
MPH	92.85	94.76	93.8	97.07	97.14	96.66	95.23	98.04	<b>95.69</b>
MPT	98.75	98.61	97.5	98.88	99.02	98.04	98.88	98.18	<b>98.48</b>
MSc. MLS	89.6	90.67	88	92	89.6	88.8	89.72	89.86	<b>89.78</b>
MSc. MUS	90.39	94.17	89.6	93.54	93.54	94.76	91.02	94.3	<b>92.67</b>
MSNCCN	97.44	98.29	97.44	98.29	98.29	96.52	98.26	98.29	<b>97.85</b>
PharmD	97.34	97.78	96.71	97.03	97.8	97.22	97.14	97.45	<b>97.31</b>
PG PharmD	97.19	97.39	95.5	97.52	96.47	98.31	94.05	97.97	<b>96.8</b>
PhDPM	100	100	100	96	100	100	100	100	<b>99.5</b>
RN-BSN	99.72	99.81	99.72	99.63	99.72	99.63	99.63	99.45	<b>99.66</b>
DDA	99.27	99.27	99.13	99.27	98.84	98.98	98.98	98.84	<b>99.07</b>
DPT	97	96.67	96.67	98	97.67	96.89	97	97.5	<b>97.18</b>
<b>Total</b>	<b><u>95.73</u></b>	<b><u>96.55</u></b>	<b><u>95.08</u></b>	<b><u>96.38</u></b>	<b><u>96.45</u></b>	<b><u>96.59</u></b>	<b><u>95.6</u></b>	<b><u>96.62</u></b>	<b><u>96.13</u></b>

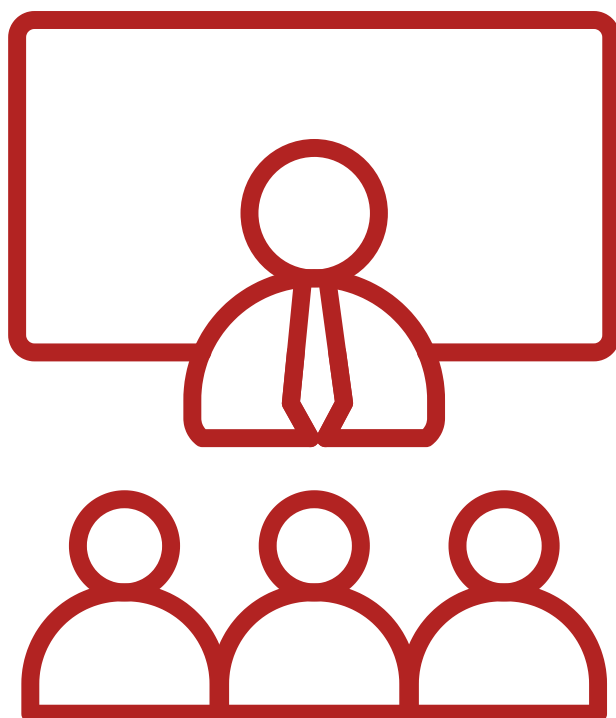


# Student Satisfaction with Faculty

Internal Benchmark = 85%



Colleges/ Departments	Clarity of Objectives	In-Depth Knowledge	Class Management	Interaction	Out of class Accessibility	Fair & Equal Treatment	Use of technology	Feedback on Formative Assessment	Constructive Feedback	Overall Faculty Satisfaction
CoD	98.32	98.67	98.32	98.51	98.69	98.48	98.87	98.6	98.48	<b>98.55</b>
CoHME	96.08	95.95	94.76	95.92	96.01	96.08	96.01	95.37	96.14	<b>95.81</b>
CoHS	97.53	97.77	97.14	97.57	97.81	97.64	97.77	97.01	97.39	<b>97.51</b>
CoM	97.51	98	97	97.27	97.63	98.02	98	97.2	97.46	<b>97.57</b>
CoN	98.3	98.12	98.02	98.22	98.04	98.1	98.05	98.07	98.08	<b>98.11</b>
CoP	98.9	99.05	99.06	98.89	99.07	98.86	99.12	98.73	98.92	<b>98.96</b>
GE	96.4	97.35	95.77	96.72	95.4	97.02	97.32	95.81	95.92	<b>96.41</b>
TRIPM	97.44	97.6	96.64	97.28	96.77	95.04	97.44	96.45	96.16	<b>96.76</b>
Overall	<b><u>97.56</u></b>	<b><u>97.81</u></b>	<b><u>97.09</u></b>	<b><u>97.55</u></b>	<b><u>97.43</u></b>	<b><u>97.41</u></b>	<b><u>97.82</u></b>	<b><u>97.16</u></b>	<b><u>97.32</u></b>	<b><u>97.46</u></b>



# Student Satisfaction with MBBS/MD Clinical Faculty (Phase3)

Internal Benchmark = 85%

MBBS Phase 3	Positive Attitude	Inclusion in Team	Set clear tasks	Helped in Professional development	Provided Regular feedback	Overall Faculty Satisfaction
Group Clinical Faculty	95.21	95.18	94.22	95.63	95.63	<b>95.61</b>
External Clinical Faculty	98.06	97.68	97.64	97.75	97.97	<b>97.94</b>
Overall	<u>97.28</u>	<u>97.14</u>	<u>96.86</u>	<u>97.53</u>	<u>97.42</u>	<u>97.25</u>



# Employer Satisfaction & Perception Indicator

Internal Benchmark > 4.25

Type to search	
<input type="checkbox"/> 2025-2026	2
<input checked="" type="checkbox"/> 2024-2025	56
<input checked="" type="checkbox"/> 2023-2024	557
<input checked="" type="checkbox"/> 2022-2023	571
<input checked="" type="checkbox"/> 2021-2022	362
<input checked="" type="checkbox"/> 2020-2021	452
<input checked="" type="checkbox"/> 2019-2020	356
<input checked="" type="checkbox"/> 2018-2019	222

## Technical Skills



How effectively did the graduate demonstrate the technical skills required for their role?



How proficient is the graduate in applying theoretical knowledge to practical tasks?

## Soft Skills



How well does the graduate communicate effectively with colleagues and clients?

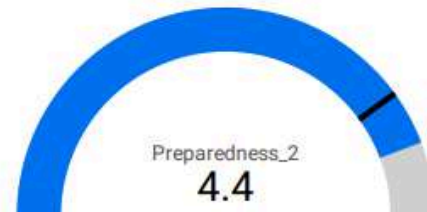


How would you rate the graduate's ability to work collaboratively in a team setting?

## Preparedness



How well-prepared was the graduate for the responsibilities and expectations of their role?



How would you rate the graduate's ability to handle challenges and problem-solving in their role?

## Adaptability



How quickly did the graduate adapt to your organization's work environment and culture?



How well does the graduate demonstrate a willingness and ability to learn new skills or processes?

# Alumni Perception Indicator

Internal Benchmark > 85%

Year	Count
<input type="checkbox"/> 2025-2026	2
<input checked="" type="checkbox"/> 2024-2025	56
<input checked="" type="checkbox"/> 2023-2024	557
<input checked="" type="checkbox"/> 2022-2023	571
<input checked="" type="checkbox"/> 2021-2022	362
<input checked="" type="checkbox"/> 2020-2021	452
<input checked="" type="checkbox"/> 2019-2020	356

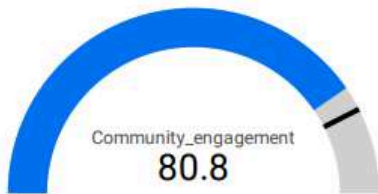
## Teaching and Learning



## Learning Support and Environment



## Co-Curricular & Extra-Curricular Activities



## Overall Satisfaction



# Student Scholarship

Program Name	Student Count	Amount in AED
College of Medicine	366	9,851,943.59
Higher Diploma in Preclinical Sciences	94	534,017.86
Bachelor of Medicine and Bachelor of Surgery	38	830,873.85
Doctor of Medicine	122	5,926,919.17
Bachelor of Biomedical Sciences	50	171,135.75
Graduate Entry Doctor of Medicine	25	1,694,911.91
Masters in Health Professions Education	26	435,092.57
Master in Public Health	8	71,500
Doctor of Philosophy in Precision Medicine	3	187,492.50
College of Dentistry	151	1,922,747.66
Bachelor of Dental Surgery	129	1,445,739.30
Master of Dental Surgery in Periodontics	2	16,190.48
Master of Dental Surgery in Endodontics	1	3,675
Diploma of Dental Assistant	19	457,142.88
College of Pharmacy	146	1,715,836.83
Bachelor of Pharmacy	59	703,142.88
Doctor of Pharmacy	16	64,283.34
Postgraduate Doctor of Pharmacy	19	171,675
Master in Clinical Pharmacy	34	387,450
Master of Science in Drug Discovery and	7	75,000
Diploma in Pharmacy Technician	11	314,285.62

# Student Scholarship



College of Health Sciences	338	4,418,543.49
Bachelor of Physiotherapy	117	1,221,243.12
Bachelor of Science - Medical Laboratory Sciences	48	553,452.51
Bachelor of Science - Medical Imaging Sciences	46	601,697.71
Bachelor of Science - Anesthesia Technology	64	1,146,838.26
Master of Physical Therapy	22	326,883.34
Master of Science in Medical Laboratory Sciences	18	157,500
Master of Science in Medical Ultrasound	23	410,928.57
College of Nursing	145	1,845,862.19
Bachelor of Science in Nursing	116	1,690,004.99
Bachelor of Science in Nursing for Registered	24	86,857.20
Master of Science in Neonatal Critical Care Nursing	5	69,000
Thumbay College of Management and AI in	138	1,897,502.41
Bachelor of Science in Healthcare Management and	118	1,357,102.38
Executive Master in Healthcare Management and	20	540,400.03
<b>Total</b>	<b>1284</b>	<b>21,652,436.17</b>

"An investment in knowledge pays the best interest." - Benjamin Franklin



# Meet the QA&IE Team



**Sara  
Osman**

**Associate Dean of  
the QA&IE**



**Cristeta  
Magpantay**

**Deputy Manager -  
Institutional  
Research**



**Lubna  
Abdeljawad**

**Coordinator -  
Program  
Evaluation and  
Accreditation**



**Salah  
Khalifa**

**Institutional  
Research Specialist**



**Fathima  
Sheik**

**Strategic Planning  
Coordinator**



جامعة الخليج الطبية

**GULF MEDICAL UNIVERSITY**  
ACADEMIC HEALTH CENTER

## **Quality Assurance & Institutional Effectiveness Deanship**

**phone** +971 6 7431333 Extn: 1431, 1546

**email** [iru@gmu.ac.ae](mailto:iru@gmu.ac.ae)