



Essential Information for students related to COVID19 Control

(Based on the National Guidelines for Clinical Management and Treatment of COVID-19, Version 4.3, released 15th July 2020)

1-Defenitions:

1-1- Suspected Case:

- A person who develops signs & symptoms of URTI/LRTI following unprotected exposure with a covid-19 positive patient.
- Unexplained SARI without lab results

1-2 Confirmed case:

A person with Lab confirmed test of covid-19 PCR, irrespective of clinical signs & symptoms.

1-3 Protected Contact:

Exposed while you are wearing mask all the time, maintaining social distancing, doing frequent HH and following cough & sneeze etiquettes.

1-4 Unprotected Contact:

Exposed to known positive or suspected case by not wearing mask, proximity within 1-meter circumference and spending more than 15 minutes.

Note: Timeframe of exposure from a case:

2 days before the onset of symptoms up to symptoms subsides.

2- National Guidelines for Clinical Management and Treatment of COVID-19:

2-1 Community Acquired Covid-19 Infection:

- **Mild cases- without comorbid condition:** Home Quarantine with frequent monitoring of health.
- **Mild cases with comorbid condition:** Hospital admission.
- **Moderate & Severe Cases:** Hospital admission under medical supervision

2-2 International Travelers visiting UAE:

- They must produce a covid-19 Negative report before boarding the flight and upon arrivals all passengers are screened for covid-19 test.
 - *If Negative- 14 days Home Quarantine before resuming the workplace*
- HCWs- A minimum mandatory 7 days quarantine and submit another negative report before joining the work.

2-3 Health Care Workers:

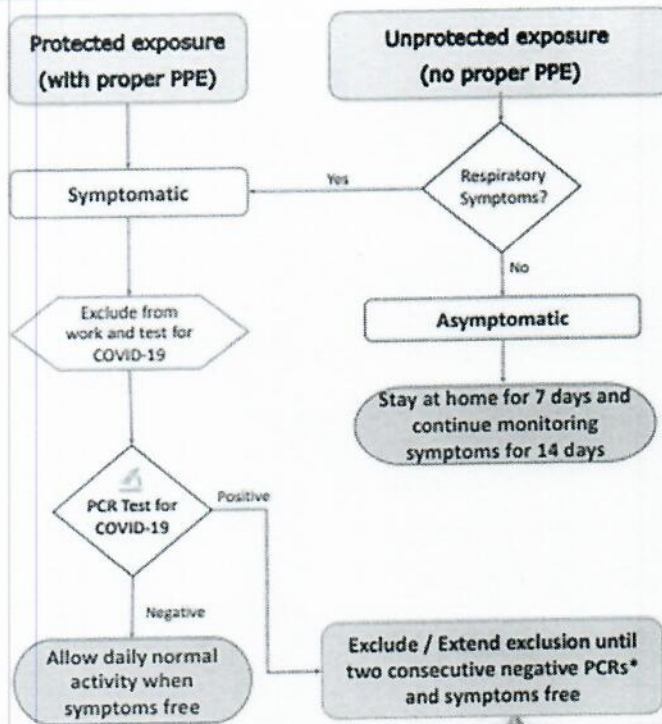
- They must wear appropriate PPE according to the work assigned.
- Routine screening of all Health care workers is not mandatory.
- Testing is only recommended for the HCWs with unprotected exposure, or if any of the HCW develops respiratory symptoms.



CONTACT TRACING FOR HEALTH CARE WORKERS



تحري المخالطين للعاملين بالقطاع الصحي



- Trace all HCWs with unprotected exposure and screen them for COVID-19 regardless of symptoms
- Healthcare workers should wear facemask at all times while they are in the healthcare facility
- COVID-19 testing is required only for symptomatic healthcare workers.
- Extra caution is required for HCWs performing aerosol generating procedures
- Home quarantine for 14 days is not required for healthcare professionals after two consecutive negative PCRs
- For health care professionals exposed to positive case with unprotected exposure during aerosol generating procedure, they can stay home for a minimum duration of 7 days and then they can join work with mask if they don't have symptoms.



3- GMU-CoHS Students Guidelines in case of Positive case contacted/Exposure:

3-1 On-campus Exposure:

- If **protected exposure**, no need to screen. Monitor your health for signs & symptoms of U/LRTI for 14 days, continue attending the class by wearing mask, social distancing and frequent HH and following cough etiquettes.
- If a **protected exposed individual develops signs & symptoms** then immediately do the PCR, and report to the supervisor for further advice i.e.:
 - 1- **if Positive- Stop working until 2 negative reports.**
 - 2- **if Negative- can resume attending classes once symptoms are free.**
- If **Unprotected contact** with an Index case:
 - 1- Stop attending classes, Home quarantine for 7 days continue monitoring the health, if asymptomatic during these 7 days can resume attending the classes after 7 days with a mask.
 - 2- **If develops symptoms**, do PCR Test and report to the supervisors with the results for further advice.

3-2 During clinical posting exposure:

- All will be monitored for 14 days period for any signs / symptoms and no need to screen



- ✓ If a **protected exposed individual develops signs & symptoms** then immediately stop, do the PCR, and report the supervisor for further advice i.e. if Positive- Stop working until 2 negative reports.
- ✓ If **Negative-** can resume attending classes once symptoms are free.
- If **Unprotected contact with an Index case:**
 - ✓ Stop attending classes, Home quarantine for 7 days continue monitoring the health, if asymptomatic during these 7 days can resume attending the classes after 7 days with a mask.
 - ✓ If **develops symptoms**, do PCR Test and report to the supervisors with the results for further advice.

4- GMU-CoHS Students Guidelines in case of Students identified Positive COVID-19:

- ❖ Student Stop attending any on-campus and/or clinical posting.
- ❖ Students advised for 14 days Home Quarantine.
- ❖ Student should seek medical attention, once he/she renders noninfectious must undergo 2 consecutive PCR Test more than 24 hours apart before joining college.

Please refer to:

- National Guidelines for Clinical Management and Treatment of COVID-19
- Procedure for Covid19 Treatment for GMU Faculty and Students


Dr. Praveen Kumar
Dean, CoHS